

# Universitätsklinikum Carl Gustav Carus der TU Dresden

## Diagnostic-Internistic-Neurological-Center - DINZ – Construcion Building 27 and Remediation of Building 19

**Client:** Universitätsklinikum Carl Gustav Carus  
der Technischen Universität Dresden

**Floor Space:** 22,823 m<sup>2</sup>

**Number of Beds:** 410 (1310 regular beds)

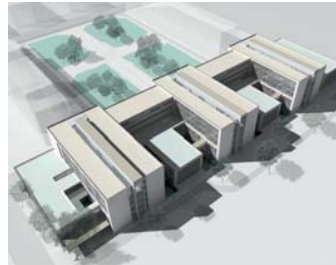
**Project Period:** 2004 to 2009

### Scope of Services:

- Medical engineering and laboratory technology
- Work phases 2 to 8 according to HOAI  
(fee structure for architects and engineers)

### Functional Areas:

- Emergency room with hematological and oncologic day clinic
- Radiology department with MRT, CT, angiography, 2 X-ray workstations and X-ray examination
- Functional diagnostic of the internal medicine, including endoscopy and ERCP
- Urologic function diagnosis with 3 operating rooms, 2 x-ray urological workstations, ESWL, cystoscopy and urodynamics
- Neurological function diagnosis with laboratory-ANF
- Vascular and cancer center with tumor board
- 5 normal care stations with 342 beds, 2 IMC with 44 beds and 2 ITS stations with 24 beds



© HWP-Planungsgesellschaft mbH Stuttgart



© HWP-Planungsgesellschaft mbH Stuttgart